

# MOTORIZED FABRIC RETENTION TRACK SHADE WITH HOUSING & 2" TRACKS

Installation Instructions

Tools Needed
Drill 3/8" Metal Drill Bit 1/4" Masonry Drill Bit Measuring Tape Pencil 4" Level Phillips #2 Driver Manual Screwdriver (Phillips)
Hardware Provided (per shade)
End Caps (Brackets) (2) Housing (1) Shade Fabric Tube (1) Side Tracks (2) Remote (1) Motor Clip (1) L Channel brackets or inside mount (2) if ordered
Hardware Needed
5/16" X 4 1/2" Lag Screws or Appropriate (4 or more)  3/8" Flat Washers or Appropriate (4 per shade)  2 1/2" Drywall Screws (6-8)  Sheet metal screws (6—8) (To install track to optional "L" Channel Mounting Bracket)

## 1c. Side Track

Flush mount: For mounting outside the opening or inside the opening (optional "L" channel mounting bracket required for inside the opening).

Side track is used to guide the hem bar during operation and retain screen material in place. Note: Side tracks (and optional "L" channeling mounting brackets, if ordered) are shipped 2+" longer than the required size. These must be cut down to size prior to installation.

## 1d. "L" Channel Mounting Bracket (Optional)

An optional bracket for use when installing the system inside an opening. This provided a surface to fasten the flush mount side track. Sizes available are 1" x 2 1/2" or 2" x 2".

**Important Note:** Due to the nature of the product, mounting procedures may vary. Where applicable, the installer must determine the best choice of mounting screws necessary for the specific installation. If installing optional "L" Channel brackets please read all instructions before installation.



## Prepare Back of Housing

Starting at one at end of housing, make two mounting hole marks 2" in from end cap on your housing.



Using a 3/8" metal drill bit, drill the two mounting holes.

Repeat this process on other side of housing with other end cap.

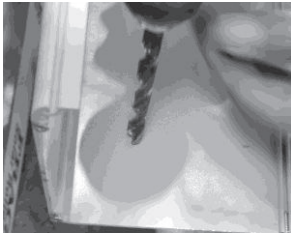


**SUN CONTROL**  
RETRACTABLE SHADES  
*America's Shade Experts*

Toll Free 877-792-1775 | Fax 877-792-0031  
swsuncontrolpro.com | sales@swsuncontrol.com

# MOTORIZED FABRIC RETENTION TRACK SHADE WITH HOUSING & 2" TRACKS

## Installation Instructions



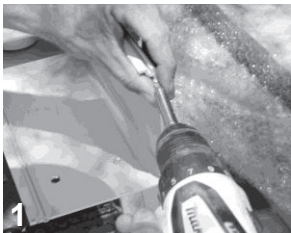
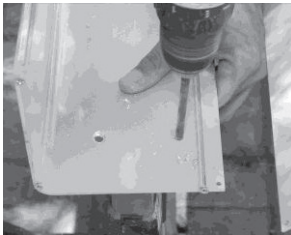
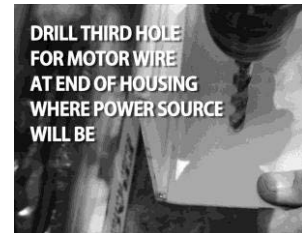
### Prepare Back of Housing *cont.*

Drill a third hole for motor wire at end of housing where power source will be.

It is best to run motor wire through side or bottom of housing. If drilling top, wire hole **MUST** be sealed to prevent water damage to motor.

[Note: Top mount holes are on top of the housing, surface mount holes are on back of the housing.]

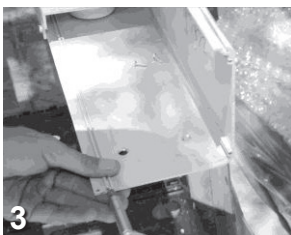
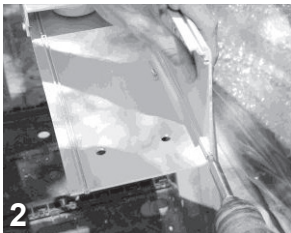
Pictures above demonstrate surface mount holes.]



[STEPS 1-3]

Start at one end of housing and remove 3 screws attached to housing and set aside.

Repeat same process on other side of housing.



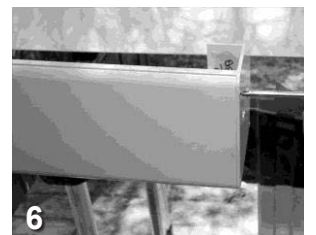
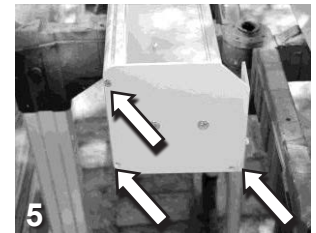
[STEPS 4-6]

Align motor end bracket up to screw holes, *(holes you just removed screws from)*

Secure bracket using 3 screws you set aside with Phillips screwdriver.

*(Arrows pointing to holes in bracket).*

Repeat same process on opposite side bearing end bracket.



# MOTORIZED FABRIC RETENTION TRACK SHADE WITH HOUSING & 2" TRACKS

Installation Instructions

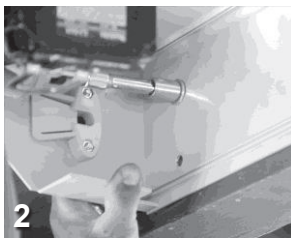


## Hang Back of Housing - 2 Person Job

[STEPS 1-4]

Once you decide where your housing will hang, hold back of housing up to surface and starting on one side, drill starter holes into mounting surface and secure first lag screw and washer on top hole.

Make sure your housing is level. Repeat process on other side of housing.



[STEPS 5-6] Once housing is secure by itself, bolt your final bottom two lags and washers on each side.

[Note: If your shade is under 10 feet wide, just bolt the two ends.

If it is greater than 10 feet, divide the span into three and bolt each section to evenly distribute the weight.]



## Installation of the roller tube and fabric assembly

Depending on the size of the unit, a two man crew is recommended for a successful, hassle-free installation due to weight and length of this component.

Locate the idler/pivot end of the roller tube assembly.

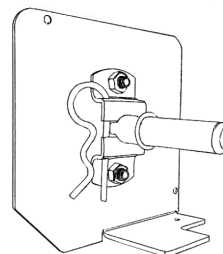
Locate the idler/pivot bracket on the inside of the installed housing assembly.

Carefully install the idler/pivot end of the roller tube into its bracket inside of the housing.

From the motor end, apply even pressure towards the idler end, while lifting and placing the motor into its bracket inside of the housing.

If plans are to route the power cord through a predrilled hole, give consideration to the routing of the cord at this time.

Reinstall the previously removed retention spring clip.



**Correct**



**Incorrect**

Ensure that the roller tube is completely secure in its brackets inside of the housing.

# MOTORIZED FABRIC RETENTION TRACK SHADE WITH HOUSING & 2" TRACKS

Installation Instructions

---

## Side Track Installation

Lower screen until the weight bar hangs at least 5" from the bottom most portion of the housing. Verify that the hem bar is level. If not, lower the screen and use the hook and loop to adjust. Raise the screen and recheck to ensure leveling.

---

### Measuring / Cutting the Side Tracks

The side tracks are shipped according to the customers ordered height with an addition 2 inches in length.

They must be cut down to the exact length needed prior to installation.

Measure from the bottom left of the system housing to the floor.

This will give you the required cut length for the left side track.

(Note: To determine which is left or right, look at the top end cap of the side track and observe where the fabric enters the side track).

Take deductions for cutting the side track from the bottom of the track.

Mark the side track for cutting with the end caps left in placed on the track.

Verify you allowed for thickness of bottom cap in your deductions.

Cut the side track to the measured with end caps, PVC and track cover in place.

This prevents the snap in cover and fabric guide PVC from sliding out of the track housing while cutting.

Remove the bottom end cap from the end piece just cut.

Next, from the full length of cut side track, slide out the snap-in cover.

Mark the left piece L and right piece R. These will be reinstalled later.

Remove burrs from the bottom of the cut side track and install the bottom end cap.

To facilitate an easier entrance for the zipper into the side track, use a box cutter or other sharp cutting device to "V" notice the PVC at the top of the track where the zipper will slide in.

If you plan to run electrical cord down the side track, now is the time to pre drill the entrance through the top cap or somewhere else on the side track.

**Do NOT attach side tracks to structure at this time**

---

# MOTORIZED FABRIC RETENTION TRACK SHADE WITH HOUSING & 2" TRACKS

Installation Instructions

## Side Track Installation *cont.*

### Installation of Optional "L" Channel Mounting Brackets

If using the optional "L" mounting brackets, cut to required length at this point.

Next, install the brackets.

The back of the brackets should be lined up with the back of the housing.

Make sure the bracket is mounted level to the inside of the opening, going from top to bottom.

It is recommended that you pre-drill the

bracket prior to final installation to the inside of the opening (do not pre-drill for the side track attachment at this time).

Put in the top mounting fastener, then level the channel and put in the bottom fastener to maintain the level.

Complete this installation by securing bracket with additional fasteners, top to bottom, ensuring the bracket remains level.

**Do not attach side tracks to the channel at this time!!**

### In order to install track and further install screen into track, do the following

Determine the ideal position for the side tracks in relation to the position of the system housing.

Side tracks must be placed directly below the system housing with the fabric slot in the track facing inside of the opening.

The outside edge of the side track fits even with the outside edge of the system housing.

Hold the side track in place and mark the inside of the open area where to drill for mounting screws.

Drill mounting holes into the side track.

(It is a good idea to slot or round out the holes a small amount from left to right to allow for some movement during final alignment performed later).

Make sure to thread power cord through appropriate side track before installing track to fabric.

For ease of installing screen into the side track, holding the right track at an angle, insert the zipper coil of the screen into the track and into the PVC insert located inside the side track. Install top fastener into the side track without tightening.

Repeat this process for the left track.

After both tracks are installed with top fasteners only, the weight bar should be riding in the side track 5 inches under the system housing.

Press the down arrow button on the remote and allow the screen to return to its lowest limit.

As it does this, it will push the tracks to the best operation position.

Attach bottom fastener in each track again without tightening.

Run the screen up and down to ensure there are no binding areas.

# MOTORIZED FABRIC RETENTION TRACK SHADE WITH HOUSING & 2" TRACKS

## Installation Instructions

In order to install track and further install screen into track, do the following *cont.*

Tighten top and bottom fasteners and recheck screen operation.

Add the remaining fasteners, checking continually to make sure no binding has occurred.

The screen material should be tight between the side tracks but loose enough to allow the screen and hem bar to travel freely up and down when operated.

Screen should have a slight flutter. Install the

snap in cover (making sure you have the correct cover for each side track) to conceal mounting screws and electrical cord (if routed this way).

The easiest way is to start at the top and gently work down to the bottom.

Sometimes, the cover will appear too long.

To correct this, place something under the bottom edge and tap up, after this, it should snap in completely.



### Adjust Motor Limits *NOTE: Motors come pre-programmed with short limits.*

To change the lower limit, send the motor to its current lower limit by pressing the down arrow.

Press both the up and down button at the same time until the motor jogs.

Adjust to your desired lower limit position and press the "my" button until the motor jogs.

This saves your lower limit.

To change the upper limit, send the motor to its current upper limit.

Press both the up and down buttons at the same time until the motor jogs.

Adjust to your desired upper limit position and press the "my" button until the motor jogs.



This saves your upper limit. Adjust the upper limit until the screen retracts fully to the top.

The hem bar should barely touch the bottom most portion of the housing assembly.

Adjust the lower limit so that the hem bar stops near the floor without crushing the pile brush.

This space will also allow for the fabric to relax from having been rolled up in shipment.

Raise and lower the screen a few times, verifying that the screen stops at the set limits.

Readjust the limits as necessary.

### Installing Housing Cover and Clean Up

You're done! Enjoy!

Locate the cover fastening groove on the upper portion of the system housing. Carefully insert the housings cover into the groove through the length of the unit. Secure the cover by snapping to housing, at the bottom of housing. On large widths, you may wish to put a stainless steel self-tapping screw into the housing cover where it snaps over the flange for additional safety.