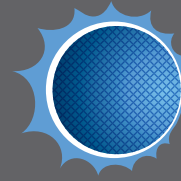


ADJUSTABLE HEM BAR

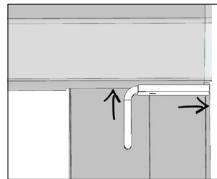
INSTALLATION INSTRUCTIONS



SUN CONTROL
RETRACTABLE SHADES
America's Shade Experts

STEP 1

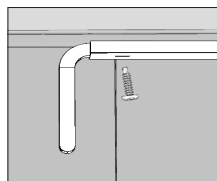
- Align the hem bar bracket to the edge of the box hood and flush with the track.



NOTE:

- ⚠ 2 person job

- Holding the box hood and hem bar bracket in place, secure with hood screw previously set aside.



- Repeat on opposite side.

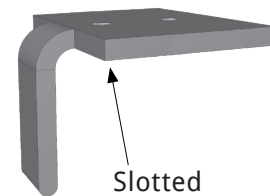
Before you begin

Remove hem bar brackets from hardware packaging.

If box hoods screws are installed, remove and set aside.

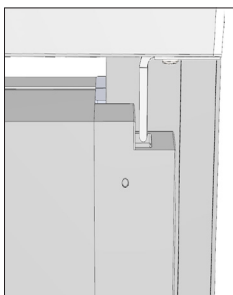
⚠ INFORMATION

⚠ Hem bar brackets are pre-drilled. Inside screw hole is slotted.

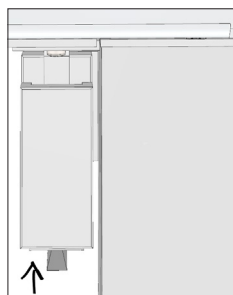


STEP 2

- Run shade up, stopping short of top limit setting to verify that the hem bar bracket is positioned properly. Hem bar bracket should sit in the center of the end cap opening.



- Make adjustments to hem bar bracket by adjusting its position within the pre-drilled slotted screw hole.



- Run shade to the top limit setting to ensure the adjustable hem bar is fully retracted.

STEP 3

- Lower shade.
- Use appropriate hardware, pre-drill through box hood on the outside screw hole of the hem bar bracket.
- Secure hem bar bracket with 2nd screw.

